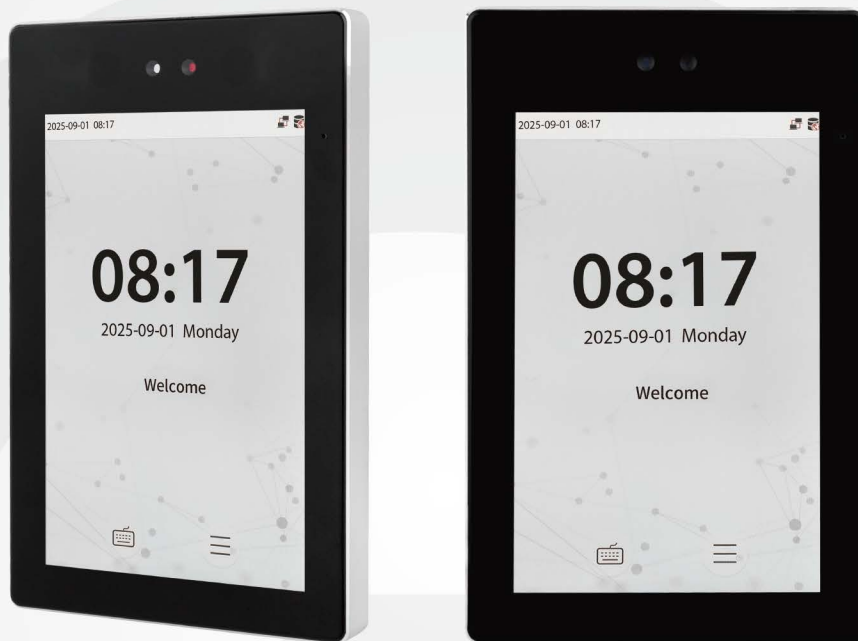


ProFace X

Outdoor & Vandal-resistant Facial Recognition Terminal



ProFace X is a fully upgraded version of the ProFace product line, which is designed to deal with all kinds of scenarios. It's powered by the latest ZKTeco-customized CPU for running the intellectualized engineering facial recognition algorithm to boost up the performance in all aspects.

With its powerful core and the latest facial recognition algorithm, the ProFace X facial recognition capability has reached a new height in the biometrics industry with a maximum of 100,000 facial templates, facial recognition speed less than 0.09 sec per face, ultimate anti-spoof ability against almost all types of fake photos and videos attack .

Other than the powerful core, ProFace X is also equipped with the latest face capture system, which enables the terminal to recognize faces under extreme strong light conditions (50,000 lux), and a microwave detector to precisely evaluate the distance between the user and the device for waking up the terminal.

ProFace X comes with a robust design that can work in extreme weather conditions from -30°C to 60°C (-22°F to 140°F) ; The IP68 dust and waterproof standard and IK04 protection standard also enhance its outdoor durability.

ProFace X integrates with the ONVIF video protocol to connect to the ONVIF NVR for video surveillance and recording. Moreover, ProFace X supports SIP Protocol connect to the indoor unit.

Features

- Ultra-large capacity of facial templates; 1:N - 30,000 facial templates (standard), maximum 1:N - 100,000 facial templates (optional), 1:N-5,000 palm templates (optional)
- Rapid facial recognition within 0.09s, palm recognition within 0.2s
- Anti-spoofing algorithm against print attack (laser, color and B/W photos), videos attack, and 3D mask attack
- Intelligent energy-saving design, precisely evaluates the distance up to 2.5m (8.2ft) between the user and the device by a microwave detector before waking up the recognition terminal
- Integrated multiple RFID modules
- 2MP starlight CMOS sensor camera with WDR function, which enables the terminal to recognize faces under extreme lighting conditions (0.5 lux – 50,000 lux)
- Video intercom: ZKTeco private protocol via TCP/IP & standard SIP protocol (optional)
- ONVIF Protocol (Optional)
- Dynamic QR code with ZKBio Zexus Mobile APP
 - 8" touch screen with 400 lux, which offers high visibility under strong and direct light
 - Multiple communication methods: TCP/IP, RS485, RS232, Wi-Fi (optional)
 - IP68 dust-proof and waterproof standard and IK04 protection standard
 - Wide range of working temperature (-30 ~ 60°C; -22 ~ 140°F)

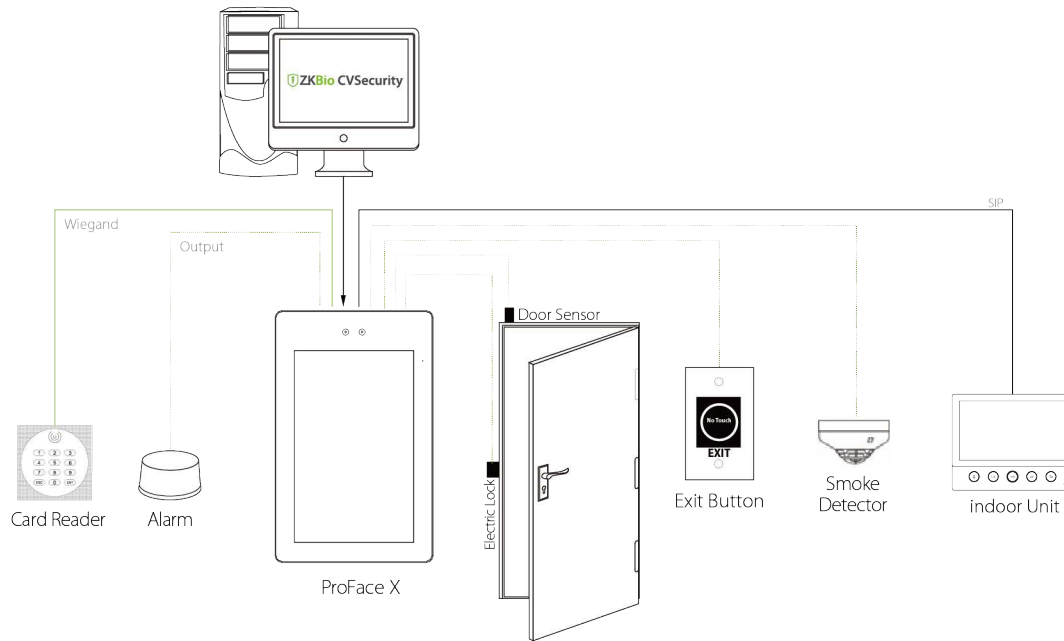
* Note: Palm authentication is for indoor use only.

Specifications (G: GL Exclusive Feature)

<p>Capacity</p> <ul style="list-style-type: none"> G Faces 30,000 (1:N) 100,000(Optional) Palm 5,000 (Optional) G Users / Cards 100,000 (Optional) G Transactions 1,000,000(Optional) 2,000,000) User Photos 10,000 Event Photos 7,500 <p>* Note: ProFace X with the optional 100,000 faces capacity, it does not support the following features: photo saving function, video intercom function, palm authentication</p> <p>Compatibility</p> <p>Security Relay Box Wiegand / RS485 Slave Reader with FP / RFID / Barcode / QR-code</p> <p>G Software: ZKBio CVSecurity</p> <p>Hardware</p> <p>1.2GHz Quad Core Customized Computer Vision CPU 1G RAM / 8G Flash</p> <p>G 8" (400lux) IPS Touch LCD ID Card</p> <p>G IC Card Multi-Tech Card Module:</p> <p>G Module 1 : ID & IC & DESFire EV1 / EV2 & Felica Module 2 : ID & IC & DESFire EV1/EV2 & FeliCa & HID Prox & HID iClass 2MP WDR Low Light Camera Hi-Fi Voice Microphone Distance Detection Sensor Reset Button and Tamper Switch</p>	<p>Access Control Interface:</p> <p>Lock Relay Output Alarm Output / Auxiliary Input Exit Button / Door Sensor</p> <p>Special Functions:</p> <p>G IP68 & IK04</p> <p>G 0.09s High Speed Face Verification Live Face detection Communication Https Encrypted Optional</p> <p>G Event Snapshot</p> <p>G Video Intercom : ZKTeco Private Protocol via TCP/IP Support Devices: Standalone Terminal: Proface X Indoor Monitor: VT07-B01, VT07-B01-W</p> <p>Standard SIP Protocol Support Devices: Standalone Terminal: Proface X Indoor Monitor: VT07-B22L, VT07-B26L-W Software: ZKBio CVSecurity, BioTalk Pro Mobile App: ZKBio Zexus</p> <p>ONVIF Protocol (Compatible with Profile S, Profile T, Profile G, Profile C, Profile Q & Profile A)</p> <p>Standard Functions:</p> <p>Access Levels, Groups, Holidays, DST, Duress Mode (Password), Anti-Passback, Record Query, Custom Wallpaper & Screen Saver, Tamper Switch Alarm</p>	<p>Communication</p> <p>TCP/IP Wiegand Input / Output Wi-Fi (Optional) RS485* / RS232*</p> <p>Additional Info</p> <p>G ZKFace V3.6 & ZKPalmVein V20.1 Operating Temperature: -30°C ~ 60°C, (-22°F~ 140°F) Operating Humidity: ≤93% Storage Temperature: -40°C ~ +65°C Storage Humidity: ≤93% Net Weight: 853g Dimensions (L*W*D): 227*143*26mm</p> <p>Power</p> <p>Operating Voltage 12V DC Current Draw < 2,000mA</p> <p>Order ID</p> <p>ProFace X : AC01-PF12H-P47 ProFace X[CH] : AC01-PF13H-P47</p>
--	---	--

* Note: RS232 is for external printer and RS485 is for RS485 readers.

Configuration



Dimensions (mm)

